


## BEST PRACTICE

**LOCATION:** Quarry  
**ACTIVITY:** Manual handling and storage  
**SUB ACTIVITY:** N/A  
**BEST PRACTICE No:** BP176

**ARTICLE YEAR:** 2005  
**COMPANY:** Aram Resources  
**COMPANY LOCATION:** Carnsew Quarry, Cornwall  
**COMPANY TEL:** 01326 375660

### TITLE

 On Video

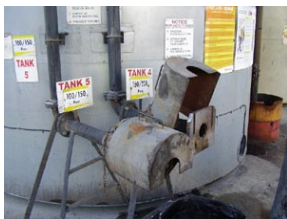
## Splash guard for delivery flange

### ARTICLE

Following an incident at Carnsew Quarry where a bitumen delivery driver caused a spillage, the safety team decided to design and manufacture a splash guard to fit over the delivery flange.

Two different prototypes were built by John Hudson, in consultation with Shell Bitumen™s delivery drivers. The preferred design included a hinged cover secured with a safety bar to allow the pipes to be easily connected. Once the pipes have been connected, the cover is lowered into place and locked by the safety bar. A •belt-and-braces• solution.

### ARTICLE IMAGES



Splash guard for delivery flange