

BEST PRACTICE

LOCATION: Maintenance & Housekeeping **ARTICLE YEAR:** 2008
ACTIVITY: Maintenance & Housekeeping **COMPANY:** Hanson
SUB ACTIVITY: N/A **COMPANY LOCATION:** United Kingdom
BEST PRACTICE No: BP607 **COMPANY TEL:** 01454 316000

TITLE

Preventing Slip, Trips and Falls

ARTICLE

A recent slip trip fall event at a Quarry initiated a review of RA & SWP for operating and maintaining the sites Hitachi 870 Excavator. The slip, trip fall event occurred when an operative attempted to re-fuel the excavator, he was not able to perform this task from a position of safety at ground level and had to stand on the excavator track to access the fill point.

The introduction of a retro fit compression hose connection now enables this task to be completed safely at a cost of approximately £60. The site also reviewed the greasing point as this was also accessed at height, this has now been relocated to a position that can be accessed from ground level.

Action Point:

LReview your mobile plant and equipment RA & SWP.

LCan you maintain and re-fuel your plant from a place of safety.

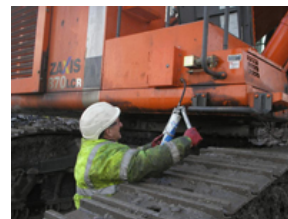
Remember always Take One not a Chance!

For more information on Slip, Trip, Fall Prevention follow the link below
<http://www.hse.gov.uk/slips/causes.htm>

ARTICLE IMAGES



Greasing point before improvement



Ground floor access point