

'The Fatal 6' - Unsafe Work at Height & Isolation Breach

WHAT HAPPENED

Contractors were observed working unsafely on a mobile crusher - the crusher wasn't fully isolated as per Company procedures and their transport vehicle was left unattended with the engine running.

- Contractors had been inducted, and clearance to work issued for the RAP crushing operation

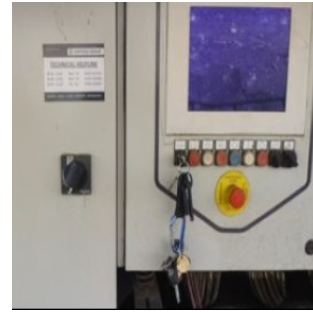
- The clearance to work did not include any maintenance that might be required for the equipment

- Unauthorised maintenance was being carried out by the contractor

- Isolation information was part of the induction regarding Company processes

- Equipment was not fully isolated by the contractor and the contractor did not contact any Company employee regarding the need for isolation

- Work at height was not controlled adequately or an authorised activity by the contractor



LEARNING POINTS / ACTIONS TAKEN

- All contractors must have a specified Company person who will be their point of contact
- The Company person must carry out and document regular interactions with the contractors whilst on site to ensure task-specific controls are in place and being followed
- All equipment before being worked on must have a Company isolation owner
- All working at height must be adequately controlled through robust HIRA (Hazard Identification & Risk Assessment) and Methods of Work
- All work carried out by contractors must be authorised by Company management.

LOCATION: OTHER
ACTIVITY: MAINTENANCE & HOUSEKEEPING
SUB ACTIVITY: N/A

ALERT STATUS: High Potential
DATE ISSUED: 03/04/2020 16:35:57
INCIDENT No: 02554

