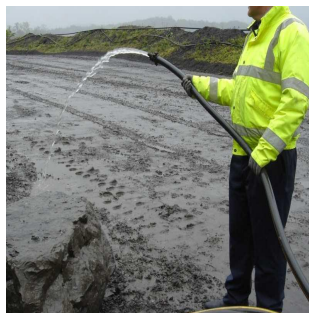


# Fall from Tipper

## WHAT HAPPENED

After tipping PFA at a cement works, a contract haulier driver entered the rear of his tipper to remove the remnants of the load. Whilst negotiating the short access ladder at the rear of the vehicle he slipped and fell injuring his lower back and the crown of his head. As this accident led to the driver being hospitalised for more than 24hrs it was recorded as a Lost Time Incident and a RIDDOR reportable event.

The activity of tipper entry had been deemed an unsafe practice and this had been previously communicated to the Haulage Company. Furthermore, to assist hauliers, a wash station had been put in place thus removing the need to enter tipper bodies.



Picture 1: Pump Inoperative

## LEARNING POINTS / ACTIONS TAKEN

On inspection, the water pressure at the wash station was not sufficient to allow the 'jet' of water to reach the full length of a tipper (picture No:1) and this may have been the reason why the wash station was not used. Further investigation found that the wash station boost pump had tripped, once reset the station operated as intended (picture No:2).

The supervision and control of contractors is paramount and where local rules are in place they must be enforced and policed at all times. All equipment must be suitable & sufficient for the task that it is intended.



Picture 2: Pump Working

LOCATION:  
ACTIVITY:  
SUB ACTIVITY:

CEMENT PLANT  
TRANSPORT & LOGISTICS / DELIVERY  
PRODUCT DELIVERY

ALERT STATUS: Normal  
DATE ISSUED: 25/06/2011  
INCIDENT No: 00290