

INCIDENT ALERT

LOCATION:	CONSTRUCTION/DELIVERY SITE	ALERT STATUS:	Normal
ACTIVITY:	PRODUCTION AND PROCESSING	DATE ISSUED:	24/05/2013
SUB ACTIVITY:	ASPHALT & COATED STONE	INCIDENT No:	00365

TITLE

Over Turned 1 tonne Dumper

COUNTRY OF ORIGIN

United Kingdom

ACCIDENT / INCIDENT DETAILS

Due to access issues to areas of the site, one 3 tonne dumper and two 1 tonne skip loader dumpers were being utilised to transport asphalt from the stock pile to the mini paver/hand lay operations.

As one of the 1 tonne dumpers had tipped its load of asphalt into the paver hopper, the dumper driver reversed away from the paver (across a gradient), with the dumper bucket still in it's elevated position: and the dumper overturned due to the raised centre of gravity and narrow wheel track. Fortunately, the driver was not injured during the incident although he was slightly shaken.

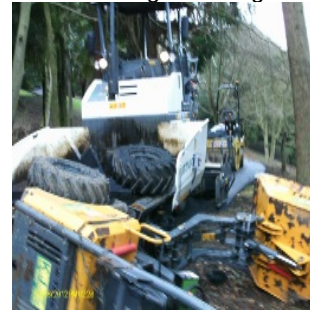
ACCIDENT / INCIDENT IMAGES

Click image to enlarge



Over turned dumper

Click image to enlarge



Over turned dumper

LEARNING POINTS / ACTIONS TAKEN

During the pre-site visit/walk through concerns were raised about the gradients and the difficulty of carrying out the work. The gradients were referenced in the Site Specific Risk Assessment but had not been transferred onto the Job Briefing Sheet.

The gradients were measured during the investigation and were found to vary between 1:5 to 1:15, running both along and across the footpath. It also became apparent that control measures identified during previous dumper incident investigations had not been implemented.

- The company has banned all 1 tonne skip loader dumpers from its operations and alternatives are being sought e.g. tracked 1.5 tonne dumpers, JCB 2CX, 3 tonne dumper etc.
- The gradients on site must be measured prior to work commencing, and checks must be made with the plant hire companies and operator's hand books, to make sure that the gradients do not exceed the plants' safe operating capabilities.
- Adequate control measures must be developed and included in the Site/Task specific Risk Assessment, added to the Job Briefing Sheet/Safe System of Work and adequately communicated to all personnel on site.
- If at any time, anyone on site is of the opinion that the work being undertaken is unsafe, they should raise their concerns with their supervisor/line manager and seek to find a safer alternative method of working.

LEARNING POINTS / ACTIONS IMAGES