

FURTHER GUIDANCE:

- ★ We are here to help – If you require further assistance on tipper vehicle deliveries – Please contact CEMEX Customer Services for assistance
- ★ Please stop and take action / report unsafe practices

If in doubt, don't tip
If unsure, ask

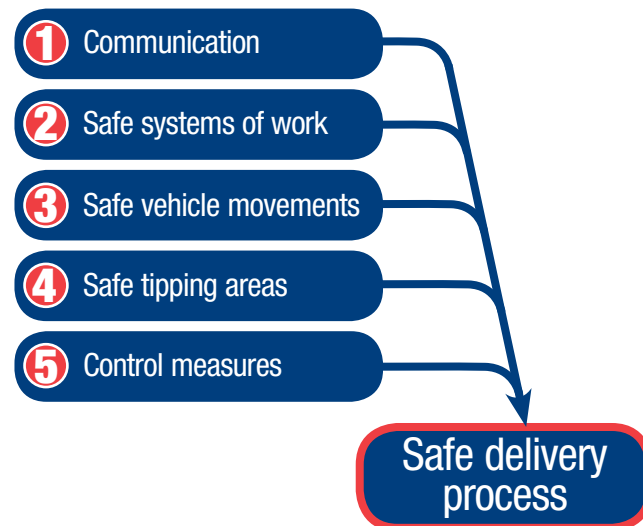


Your local contact is:



Tipper trucks

FIVE STEPS TO SAFE DELIVERIES



Each year within the construction industry, approximately ten people die on sites as a result of being struck by vehicles.

In addition, there are hundreds of preventable accidents and injuries.

Look after yourself and each other

RISKS:

What are the risks of tipper deliveries?

UK Industry Statistics:

- ★ Struck by a moving vehicle – 10 fatalities a year
- ★ Vehicle roll over – 20+ tipper roll overs per year
- ★ Overhead power cables – Incidents often involve tipping trailers
- ★ Slip, trip, falls – Most common cause of driver injury – 56% of accidents



I am loaded: - 44,000 kilos
14 metres long overall
2.5 metres wide plus mirrors
Tipper body is nearly 11 metres long



1 COMMUNICATION

When drivers arrive on site, ensure they are familiar with:

- ★ Site rules and emergency procedures
- ★ Traffic routes
- ★ Tipping areas
- ★ Any other specific hazards

Vehicle movements on site are controlled by banksmen

Drivers can report unsafe situations



Look after yourself and each other

2 SAFE SYSTEMS OF WORK

Systems – Are in place to minimise the risks from heavy large goods vehicle movements

Entrances and exits – Are well defined and allow safe traffic access

Visibility – Drivers driving out onto public roads can see both ways

Pedestrians – Are segregated from vehicles

Clothing – Pedestrians and drivers should wear high-visibility clothing

Crossings – Walkways are clearly signed and drivers and pedestrians can see each other clearly

Reversing – The need for vehicles to reverse should be minimised

Tipping areas – Are suitable for heavy tipping vehicles, with tipping exclusion zones



3 SAFE VEHICLE MOVEMENTS

Suitable site route to the tipping area – able to cope with weight and size of vehicles

Segregate pedestrians from traffic where possible

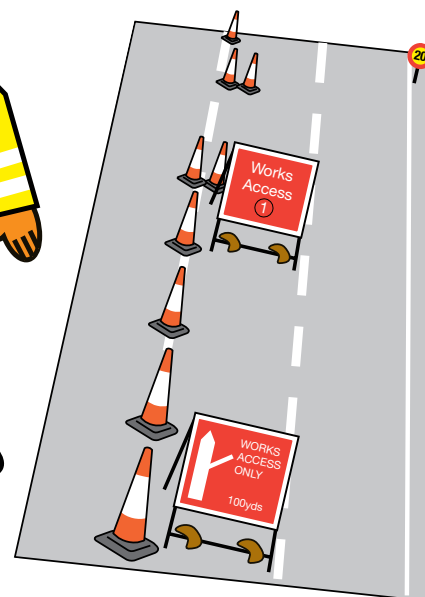
Minimise vehicle movements and reduce need for reversing – a major cause of fatalities

Routes are clearly marked for drivers to follow

Traffic is controlled by banksmen

Suitable speed limits should be established

Regular communication and awareness with all operators in immediate vicinity at all times



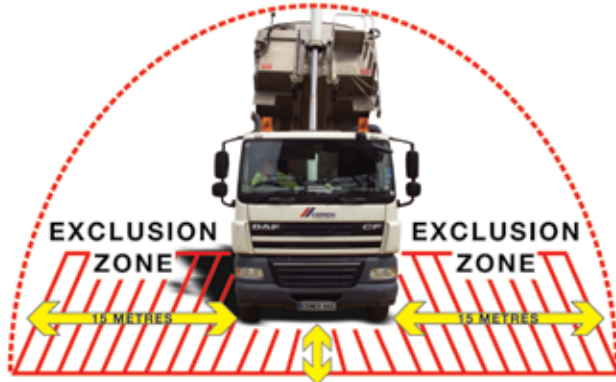
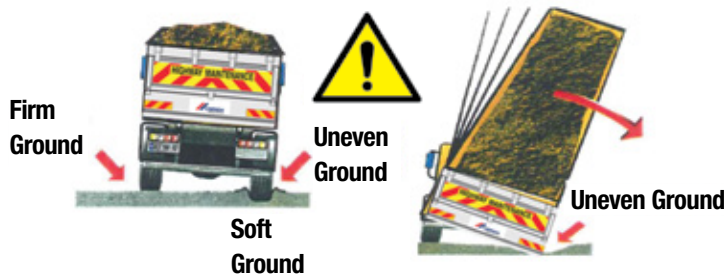
Look after yourself and each other

4 TIPPING AREAS

Suitable tipping areas in place, which are demarcated, on firm level ground with no excessive cross fall – a vehicle rollover can occur above a 4 degree incline

Exclusion zones established in tipping area to ensure that vehicles do not tip in close proximity to people or other vehicles

Vehicle movements are controlled by banksman



5 CONTROL MEASURES

Vehicle movements on site are controlled and adequately supervised

Exclusion zones established in tipping area to ensure that vehicles do not tip in close proximity to people or other vehicles

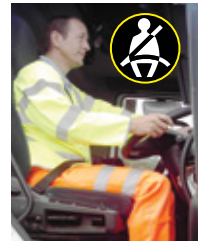
Ensure that drivers wear seat belts and PPE

Drivers stay in cabs unless required to assess tipping area, open / close rear doors etc

Weather conditions – high winds can compromise safety of tipping trailers

Overhead cables – check that no contact can be made

If daylight is reduced – is the working area adequately lit



Look after yourself and each other