

# Injury during maintenance work on a Parker Jaw Crusher 1165 Rockranger

## WHAT HAPPENED

An operator was lucky to avoid a serious head injury or fatal blow when undertaking routine maintenance on a Parker Jaw Crusher 1165 Rockranger. The failure that caused the incident could also have occurred on the 1180 Rockranger model.

The draw bar was being undone when the studs failed and the top part of the stud and bolt ejected giving a glancing blow to the operator's head and hitting his safety helmet. Fortunately, the operator was not seriously injured.

The exact reason for the failure is not known but the stud has been sent away for analysis. The springs may have been either fully or over compressed (bottoming out), which may have stressed the studs.

## LEARNING POINTS / ACTIONS TAKEN

- New springs have been fabricated with less turns, thus reducing the pressure applied and reducing the chances of the spring bottoming out if an item gets stuck in the jaws
- New draw bars will be fitted on all major overhauls
- New draw back guards, with restraining bars fitted to the top collars to prevent a recurrence.

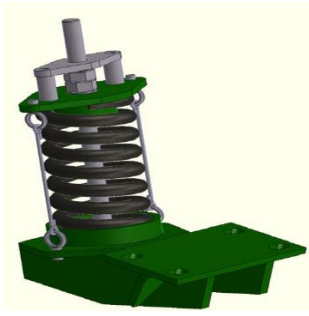


Image shows restraining bars

LOCATION:  
ACTIVITY:  
SUB ACTIVITY:

QUARRY  
MAINTENANCE & HOUSEKEEPING  
N/A

ALERT STATUS: Normal  
DATE ISSUED: 10/03/2015 14:27:36  
INCIDENT No: 01407