

Runaway Chipper Trailer

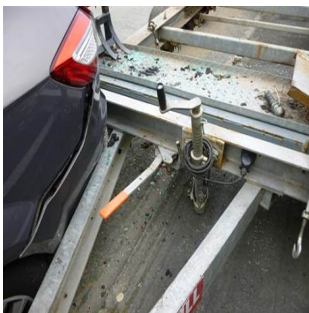
WHAT HAPPENED

A chipper trailer ran out of control 60m down a gradient after it had been parked at the side of a road by the streetmaster operator.

The incident was captured on CCTV which was fitted to a local business, and the streetmaster operator was observed applying the park brake and putting a chock beneath the near side front axle wheel.

- The gradient was estimated to be 1:15.
- The streetmaster operator was observed on the CCTV raising the front of the trailer using the jockey wheel, so he could uncouple it from the towing hitch.
- The operator was also seen applying the park brake and putting a chock beneath the front nearside axle after recognising the trailer was parked on a hill.
- The chipper trailer had three axles, and the brakes were fitted to the wheels on the front axle only.

- After being parked for 50 seconds (unattended), the chipper began to roll down the hill, picking up speed.
- After travelling a distance of 50m the trailer mounted the footpath and struck the rear end of a vehicle, which had been parked by a local resident, causing substantial damage.
- The streetmaster operator was given a 'with cause' drug & alcohol test immediately following the incident and was found to be negative.



Park brake position after incident



Chock placed under nearside wheel

LEARNING POINTS / ACTIONS TAKEN

- Trailers must be parked on level ground where practicable.

- When uncoupling the trailer from the towing hitch:
 - The jockey wheel should be lowered ensuring all wheels are in contact with the surface of the road.
 - The park brake must be applied.
 - Chocks should be placed beneath the wheels on both sides of the axle.
 - The stabilising legs should be lowered to the ground.

LOCATION:	ON-HIGHWAY	ALERT STATUS:	Normal
ACTIVITY:	TRANSPORT & LOGISTICS / DELIVERY	DATE ISSUED:	11/03/2015 11:45:39
SUB ACTIVITY:	ON-HIGHWAY	INCIDENT No:	01408