

Forklift truck incidents

WHAT HAPPENED

In a short period of time a British Precast member has seen two unrelated failures on forklift trucks:

- (i) Failure of fork attachment / carriage (see Figure 1), and
- (ii) Failure of a lift chain (see Figure 2).

In both cases no injury or significant damage occurred.

Both trucks had had statutory LOLER inspections. In one case the truck was found to have been overdue its routine service.

Following investigation one of the occurrences was deemed to be due to repeated misuse of the side shift function.



Figure 1

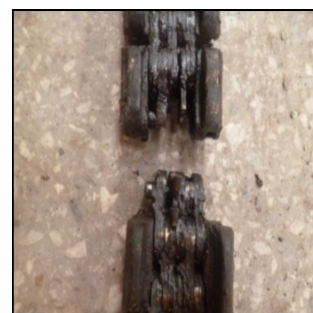


Figure 2

LEARNING POINTS / ACTIONS TAKEN

Damage can be caused by overloading or using attachments in a way in which they are not intended

Responsible Managers must:

- Ensure statutory inspection and servicing is appropriately scheduled and undertaken.
- Ensure all lifting equipment and attachments are suitable for the task and are appropriately inspected.
- Ensure only trained and authorised operatives operate Forklift Trucks
- Provide adequate supervision

Forklift Truck operators must:

Always ensure pre-start checks are completed and documented, including a visual assessment of attachments.

- Only ever operate a forklift truck in line with the training that they have been given.
- Ensure they understand any attachments, and only use them for the purpose for which they are designed. For example, the side shift function should not be used to clamp product.
- Never lift loads greater than the capacity of the lift truck;
- Report any observation or defects immediately and not use the truck if they have concerns about its condition.

LOCATION: CONCRETE PRODUCTS PLANT
ACTIVITY: LIFTING
SUB ACTIVITY: NO SUB ACTIVITY AVAILABLE

ALERT STATUS: Normal
DATE ISSUED: 29/07/2016 12:29:02
INCIDENT No: 01438