

Captive key interlocks – potential risks from existence of keyed alike and master keys

WHAT HAPPENED

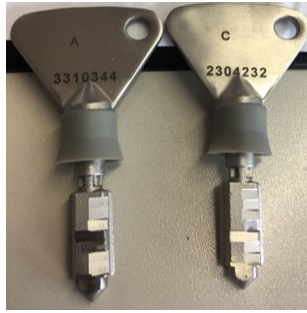
Guarding to a new equipment installed by a contractor incorporated a trap key system. It was manufactured by Fortress, but supplied by a third party wholesaler.

Concern was raised during commissioning, when it was identified that there was a spare key for the new interlock system; further significant concern was raised when it was identified that the keys would also open other existing interlocks around the site, presenting a significant risk of major injury or death.

Investigation confirmed that Fortress offer 2 ranges of keys; (CL) - which are non-masterable and (ML) - which are masterable.

When obtained from wholesalers, only a limited number of lock and key combinations are available, giving rise to a risk of having duplicate keys on site.

It has also been established that a similar risk exists with trap key systems from other manufacturers.



LEARNING POINTS / ACTIONS TAKEN

- Duplicate and / or master keys for interlock systems are prohibited on our sites.
- In this case, the systems should have been ordered direct from the manufacturer, who keep a database of the locks they supply to individual sites to ensure they are unique and not keyed alike.
- If your site use Fortress interlocks, ensure they are from the CL range.
- Verify that trap key systems are non-masterable, that there are no duplicate locks and no spare keys. Spare keys should have been destroyed.
- Log and compare the serial numbers on the lock and key sets to ensure they are unique; share this information with contractors if they are quoting to install additional interlocks.
- Always read and understand the any warnings / disclaimers associated with critical safety equipment.

LOCATION: COMPANY-WIDE
ACTIVITY: GUARDING AND ISOLATION
SUB ACTIVITY: NO SUB ACTIVITY AVAILABLE

ALERT STATUS: Normal
DATE ISSUED: 22/10/2018 11:38:22
INCIDENT No: 01497

