

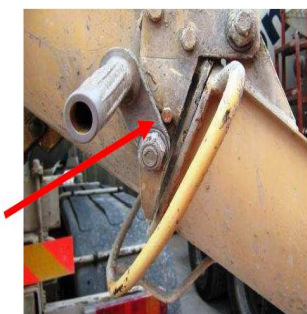
Truck Mixer Driver suffers Amputation

WHAT HAPPENED

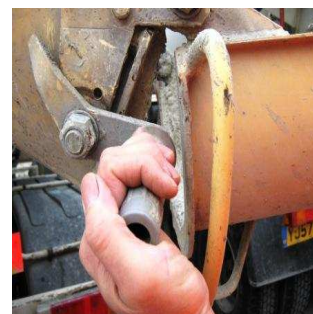
A truck mixer driver received crushing injuries resulting in the amputation of part of his little finger when the two handles in the picture came together when he operated the chute.

The bolt highlighted was missing and had not been replaced. This allowed the round bar handle on the second (lower) chute to impact against the safety catch handle on the upper chute which resulted in the injury.

The use of a small bolt to prevent the safety catch handle over rotating is being raised with the manufacturer of the mixer.



Shute with Bolt



Shute with Missing Bolt

LEARNING POINTS / ACTIONS TAKEN

Ensure regular inspections are carried out.

Report all defects.

Ensure that remedial or repair work is promptly completed.

LOCATION:	CONSTRUCTION/DELIVERY SITE	ALERT STATUS:	Normal
ACTIVITY:	TRANSPORT & LOGISTICS / DELIVERY	DATE ISSUED:	22/08/2011
SUB ACTIVITY:	PRODUCT DELIVERY	INCIDENT No:	00309