

Electrical Cabinet Delivery Incident

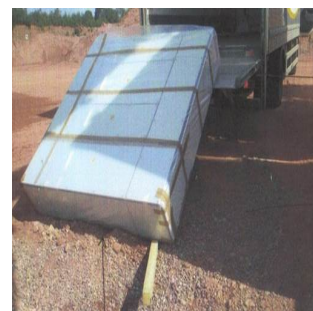
WHAT HAPPENED

A large electrical cabinet, weighing approximately 400kg, was being delivered in a box van to an electrical contractor on site. Using a pallet truck, the delivery driver moved the cabinet onto the tail lift on his delivery vehicle. As he did so the cabinet toppled over and fell off the tail lift, striking the electrician on the back of his ankle, causing soft tissue damage.

It was fortunate the injured person, who was standing near the rear of the vehicle, noticed the cabinet start to fall towards him and began to move out of the way; otherwise his injuries could have been even more severe.



Electrical Cabinet 1



Electrical Cabinet 2

LEARNING POINTS / ACTIONS TAKEN

- Whilst the delivery was expected, plans to ensure it could be offloaded safely were not in place. The delivery driver reported to the office and it was suggested the cabinet was off-loaded at the stores.

stores.

- Have Risk Assessments been created to ensure deliveries to site can be carried out safely, particularly those that are unusual due to their weight, shape, stability, etc.?
 - Is the load inspected prior to the Risk Assessment being completed and certainly before off-loading is being carried out?
 - Do we have Safe Systems of Work in place for off-loading goods and equipment to ensure the necessary mechanical aids, lifting appliances, etc. are available?
-
- The delivery driver said he needed a “hand to get it off” so was directed to where the contractor was working:
 - In these situations do our contractors have robust assessments and safe systems in place for receiving goods and equipment?
 - The delivery driver asked the contractor if they would use their Hi-Ab to offload the cabinet. The Hi-Ab operator saw that the cabinet was strapped to the inside of the box van, was not fixed to a pallet and did not have any lifting eyes fitted, and refused to help.
 - When ordering equipment to be delivered to site do we stipulate the correct delivery vehicle to be used for safe off-loading?
 - Do we also clearly state how the item should be

correctly packaged and / or correct lifting points are fitted?

- Is a further assessment made of the necessary competencies required to undertake large or complex lifts?

LOCATION: OTHER
ACTIVITY: MANUAL HANDLING AND STORAGE
SUB ACTIVITY: N/A

ALERT STATUS: Normal
DATE ISSUED: 17/11/2014 14:36:39
INCIDENT No: 00388