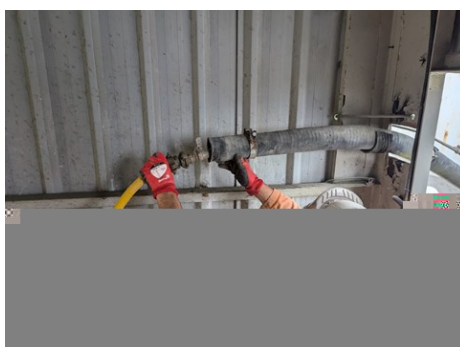


Initial Investigations indicated that the IP was undertaking a non-routine activity on site following maintenance on the recycled water tank pump. A stop assessment was conducted for the priming process. The IP proceeded to use a high-pressure water hose pipe to prime a 3" recycled water pipe. During the procedure the high-pressure hose unexpectedly recoiled whilst under high pressure, resulting in the IP's arm being forced backwards causing an injury to their shoulder.

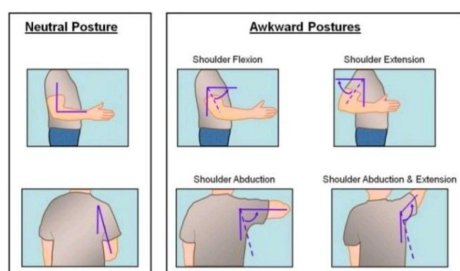
The IP was attended to by the first aiders on site and taken to the local hospital. They were diagnosed with a dislocated shoulder and returned home later the same day.

Please see below two images that show the position of the contractor when the incident occurred.



CHECK, CONFIRM & REVIEW IMMEDIATE OPPORTUNITIES TO IMPROVE:

- Check, confirm and review poor design which may cause positions of overreaching to ensure that ergonomic risks are considered and relevant controls are identified and implemented prior to the commencement of work.
- A stop assessment is not an adequate control measure for a non-routine task. A full Risk Assessment must be completed prior to work.
- Contractor management must include checks to ensure work is completed appropriately and in an operational state.
- Awkward postures refer to unnatural body positions, such as bending, twisting, or overreaching e.g. as seen below. These positions force your joints beyond their normal range of motion, significantly increasing the risk of ergonomic injuries.



A site based Investigation team has been formed and are currently investigating this incident to understand root causes and recommend corrective actions and learnings

LEARNING POINTS / ACTIONS TAKEN

LOCATION:	READYMIX OR MORTAR PLANT	ALERT STATUS:	Normal
ACTIVITY:	MAINTENANCE & HOUSEKEEPING	DATE ISSUED:	02/10/2024 11:09:02
SUB ACTIVITY:	TANKS, KETTLE DRUMS AND PIPING	INCIDENT No:	04834