

**TRANSPORT - Fatal 2 - Adverse weather conditions - black ice - causes tipper to slide and strike staircase in stockyard, driver lucky to avoid serious injury - Video**

**WHAT HAPPENED**

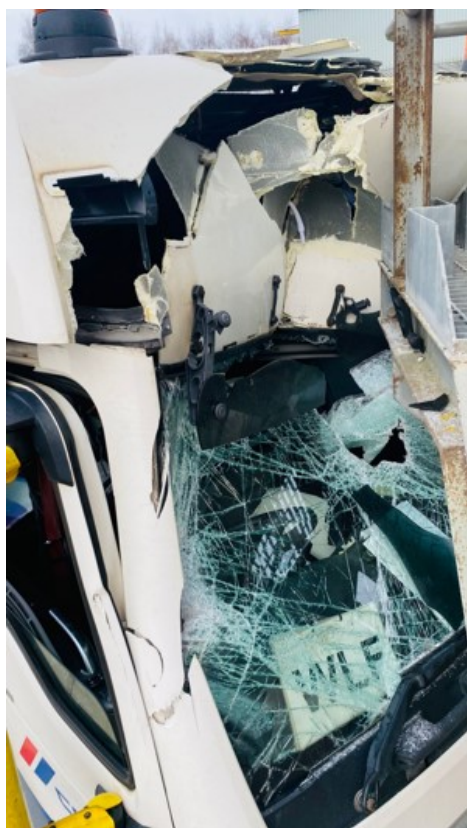
## ADVERSE WEATHER CONDITIONS

A Cemex driver arrived on site to deliver a load of sand. The loading shovel operator signalled approval to the driver to enter the stockyard by giving a thumbs up and raised the barrier.

As the vehicle was entering onto the stocking area and making a left turn, it lost control on black ice, resulting in the vehicle impacting a staircase gantry.



Fortunately, the driver was unharmed; however, the staircase penetrated the vehicle cab, which could have potentially caused serious injuries.



CEMEX has created a powerful PowerPoint that incorporates videos of the incident both from a CCTV located in the stockyard and from within the cab. It also incorporates the key learning points from this incident. When watching the videos, please bear in mind that the video of the collision runs slightly fast, and the vehicle was only traveling at 7mph. [View the incident alert that can be used as the basis for a toolbox talk.](#)

## KEY FINDINGS

- This incident reinforces the importance of implementing thorough winter preparations to maintain the safety of traffic routes.
- The vehicle was fitted with all the required safety features.
- The vehicle experienced a loss of traction on the icy surface during a left turn, which caused the driver to lose control. The weight of the trailer pushed the unit into the gantry of the staircase.
- The vehicle was travelling at a speed of approximately 7 miles per hour
- The pedestrian routes had been gritted; however, the traffic routes had not been considered
- An earlier incident occurred on the site a few hours prior, involving a vehicle that lost control due to the icy conditions.
- The driver wasn't notified of the ice present in the stockyard

# LEARNING POINTS / ACTIONS TAKEN

While this alert is relevant to all car, van and truck drivers, reminding us to take extra care in adverse weather and drive in accordance with the conditions, there are some points that site teams should consider:

- Evaluate the degree of risk associated with the icy conditions and, if required, limit access or shut down the site until it is deemed safe to proceed.
- In the aftermath of an incident, it is imperative to take prompt action to eliminate any hazards to prevent a recurrence.
- Site teams are advised to assess traffic routes to ensure that they are free from potential obstructions and that any vulnerable structures are adequately safeguarded with robust barriers or similar protective measures.
- Report and rectify identified issues associated with icy conditions promptly to prevent unsafe practices, ensuring that these issues are recorded in the near miss/hazard alert system.
- Stop, think and check it is safe, and always STEP IN if you see anything unsafe.

---

LOCATION:	READYMIX OR MORTAR PLANT	ALERT STATUS:	Normal
ACTIVITY:	TRANSPORT & LOGISTICS / DELIVERY	DATE ISSUED:	28/01/2025 20:21:56
SUB ACTIVITY:	DRIVER AWARENESS	INCIDENT No:	04857