

BEST PRACTICE

LOCATION: Concrete products plant ARTICLE YEAR: 2012
ACTIVITY: Manual handling and storage COMPANY: Stanton Bonna Concrete
SUB ACTIVITY: N/A COMPANY LOCATION: Stanton by Dale
BEST PRACTICE No: BP808 COMPANY TEL: NA
COUNTRY OF ORIGIN: United Kingdom

TITLE



Run Video

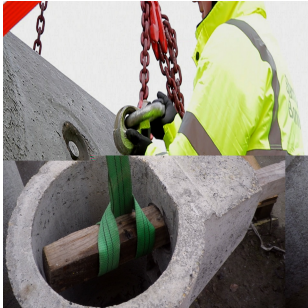
Increasing the safety of offloading through improved product design

ARTICLE

DESCRIPTION Stanton Bonna Concrete manufactures large diameter pipes. The pipes include two spherical head lifting anchors located on the top of the pipes to which chains are attached when offloading at a customer's sites. The pipes do not rotate on lifting and strike the other pipes on the load because of the location of the two lifting anchors on the top of the pipe. However, on some deliveries, the operative had to climb up ladders positioned on the flat bed truck to gain access to the top of the pipes and, when connecting chains, needed to use both hands leaving no point of contact. This method of working exposed the operative to a risk of falling. The solution to this problem was to install three anchor points located on the sides of the pipe (in a 2:1 formation) rather than on the top. An operative could now attach the chains whilst standing on the flat bed of the truck. The three points ensure that the pipe can still be lifted vertically without any rotation. BENEFITS • Significantly reduced the risk of falls whilst offloading pipes

ARTICLE IMAGES

Click image to enlarge



Click image to enlarge

