

## BEST PRACTICE

LOCATION:	On-Highway	ARTICLE YEAR	2013
ACTIVITY:	Transport & Logistics / Delivery	COMPANY:	Colas Ltd
SUB ACTIVITY:	On-highway	COMPANY LOCATION:	Traffic Management
BEST PRACTICE No:	BP861	COMPANY TEL:	01342 711124
COUNTRY OF ORIGIN:	United Kingdom		

TITLE



**360 Degree CCTV and safety enhancements on impact protection vehicle (IPV)**

ARTICLE

DESCRIPTION

Colas Traffic Management Team worked closely with Croma Security Solutions Ltd (CSSG) to develop a CCTV System fitted to an impact protection vehicle (IPV) which would capture data in real time, record and store video footage. The main purpose was to help in the identification of near miss incidents and impacts from third party vehicles.

Following the success of initial trials, a working group was set up between Colas, CSSG, Aone +, HA and TRL. It explored the possibility of including vehicle detection and early warning systems. They developed enhancements which can detect vehicles travelling at speed which have entered an area within a designated distance from the rear of the IPV. The system then warns the speeding vehicle, other travellers and the workforce on the IPV of the potential danger.

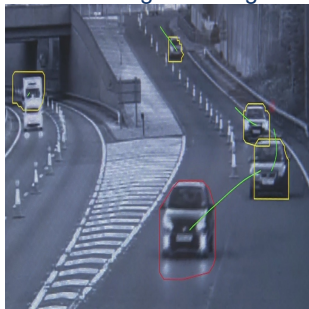
Colas are fitting this technology to all their IPV fleet and expect that contractors working for them will also comply with these requirements.

BENEFITS

- The workforce feels safer whilst carrying out their activities
- It has improved productivity and efficiency
- The visual and audible alarms have improved safety for drivers approaching works
- Has the potential to become a new standard across the industry.

ARTICLE IMAGES

Click image to enlarge



Click image to enlarge

