

Important Work at Height Lanyards and Fall Arrest Equipment Malfunction Alert!

It has come to our attention that the locking mechanisms on certain models of DMM carabiners may develop a dysfunction.

It has been found that in a small percentage of carabiners the interaction between the internal coil spring (which gives the gate its closing action) and the gate pusher (the component that holds the spring against the carabiner body) may cause the gate pusher to displace, potentially preventing the gate from closing or the mechanism from locking completely.

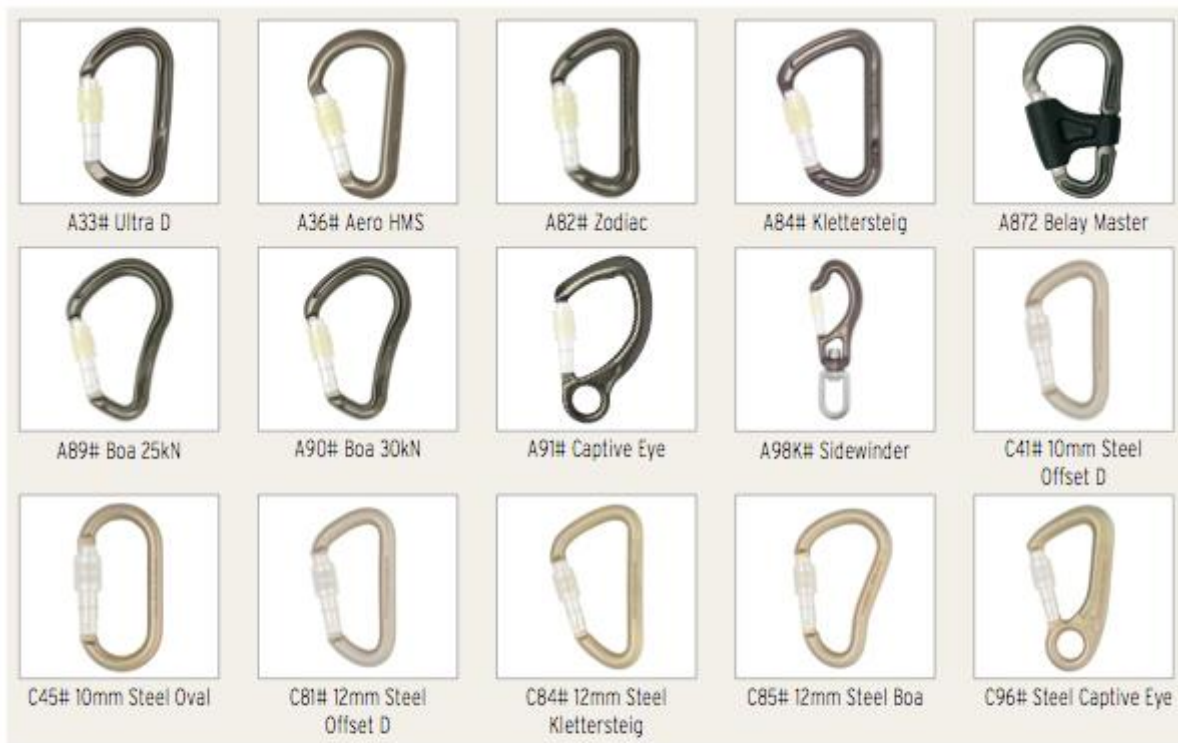
The type and product codes can be found below in **Appendix A**

What action is required?

Carabiners specified in the attached notes should be checked by a competent person, the check logged to confirm if satisfactory and, if necessary, quarantined for return to DMM.

Please follow the instructions to check the Carabiner in **Appendix B** if you are in any doubt please contact your supplier for clarification and further instructions.

Appendix A

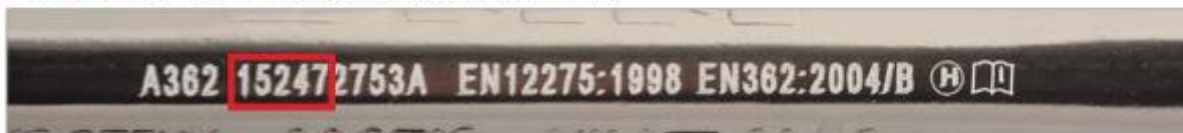


With the following serial numbers (these run sequentially):

2014 Production - **14138xxxxX to 14365xxxxX**

2015 Production - **15001xxxxX to 15254xxxxX**

The serial number can be found on the spine of the carabiner.



Affected Carabiner Models

This has obvious safety implications, and as such we are initiating a recall, subject to user inspection, of all potentially affected carabiners. The safety of the users of DMM equipment is our priority.

Appendix B Inspection Method

Notice: <http://dmmclimbing.com/documents/dmm-product-recall-14-09-2015.pdf>

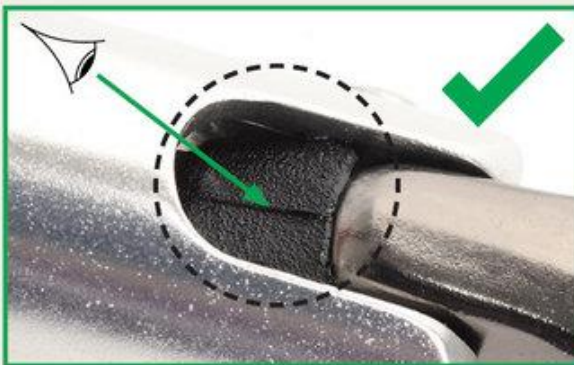
Please carry out the following inspection of the gate pusher:



The pusher is located inside the gate of the carabiner. It can be seen in the recess at the base of the gate.

Visually inspect the gate pusher for the 'moulding line'. Look carefully at the gate pusher in your carabiner, it may be necessary to open the gate, a good light source is essential. Angling the carabiner in the light will help bring the moulding line into relief.

MOULDING LINE = OK



OK, NO RECALL



no dysfunction

Do not return to DMM, continue use.

NO MOULDING LINE = RECALL



RECALL



risk of dysfunction - DO NOT USE

Immediately retire from service, quarantine and await further instructions from DMM.



OK, NO RECALL

Certain specialist carabiners utilise a stainless steel spring pusher. This is silver/grey in colour and is unaffected by the recall.

If you have any doubt about the results of your user inspection, please return to DMM for inspection according to the upcoming returns process.